



L.A.'S WORK AND PLAY **RESORT**

PACIFIC PALMS RESORT

L.A.'S HILLTOP HIDEAWAY

# L.A.'S HILLTOP **HIDEAWAY**

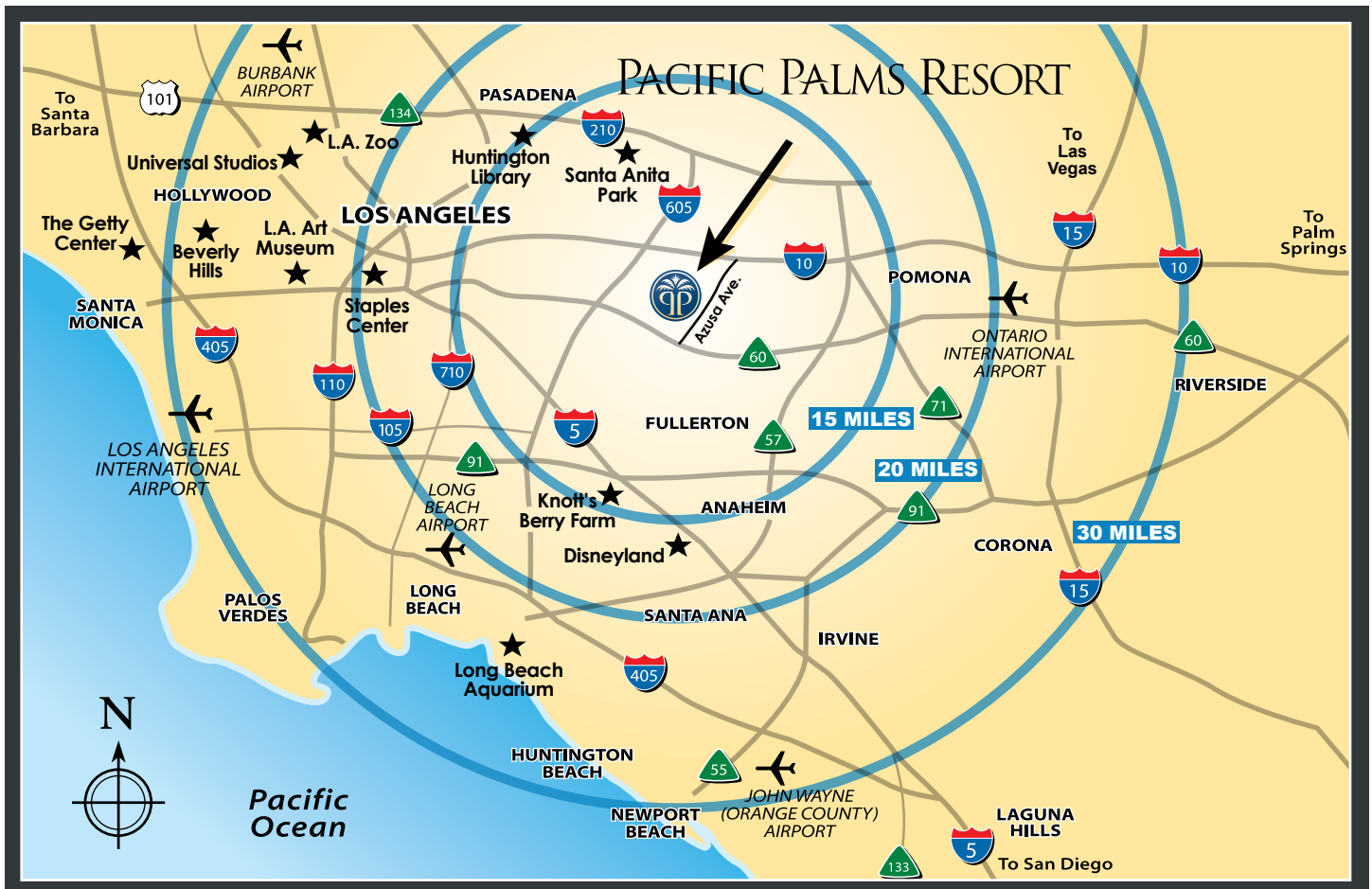
650 LUSH ACRES HIGH ABOVE THE CITY





# AREA MAP

LOCATED AT THE VIRTUAL CENTER OF SOUTHERN CALIFORNIA



- At the intersection of Los Angeles, Orange, and Riverside Counties
- 25-minute drive from downtown Los Angeles
- Easily accessible by four major interstate highways
- Located between four airports: LAX, Ontario, Long Beach, and John Wayne
- 25-45 minute drive to popular shopping, beaches and key attractions



# RESORT MAP

A 650-ACRE OASIS



**Eisenhower**  
The Ike



**Zaharias**  
The Babe



**Industry Hills  
Expo Center**

Expo Center  
Entrance

Parking

Short Game  
Practice Area

Wedding  
Gazebo

Putting  
Green

St. Andrew's  
Station

Event  
Trellis

Putting  
Green

Golf Club

Oasis Pool

RED Restaurant & Bar

Putting  
Green

Parking

**Resort**

Breeze Way

Driving  
Range

Garden Level  
(Golf)  
Parking

Putting  
Green

Temple Avenue

To the 60  
Freeway

One Industry  
Hills Parkway  
(Main Entrance)

Azusa Avenue

To the 10  
Freeway

# CONFERENCE ATTRIBUTES

L.A. COUNTY'S ONLY CONFERENCE HOTEL WITH ON-SITE CHAMPIONSHIP GOLF



## Conference Features:

- 45,000 square feet of function space including the 12,000 square-foot Majestic Ballroom
- 28 meeting and event rooms
- Ergonomic chairs, hard-surface conference tables and tackable wall surfaces
- Continuous refreshment breaks and catered dining
- Indoor and outdoor event facilities with spectacular mountain and golf course views
- Flexible meeting packages

## Industry Hills Golf Club at Pacific Palms:

- Two renowned championship courses. The Eisenhower ("Ike") and Zaharias ("Babe")
- Voted "Best Public Golf Courses" by the National Golf Course Owners Association
- Awarded 4 stars by Golf Digest
- Includes a double decker lighted driving range, short game practice area, four putting greens and an expansive pro shop
- Golf complex can handle up to 500 event golfers
- Green fees at a fraction of the cost of other championship courses

## Dining:

- Red Restaurant & Bar
  - California Cuisine with an Asian-Pacific flair
  - Indoor and lakeside dining options
  - Spectacular views of Celebration Lake, golf courses, and the San Gabriel Mountains
- Cima Restaurant
  - Daily breakfast buffet and Sunday brunch
  - Available for private and customized lunch and dinner events for up to 300 guests
  - Conference dining available for multiple groups
  - Beautiful lake and mountain views

## Guest Amenities and Services:

- 11,000 square-foot luxury spa
- Hilltop Oasis Pool
- Complimentary fitness center
- iPrefer Reward Program for Guests & Event Planners
- Non-smoking facility
- No resort fees and free parking
- Complimentary Wi-Fi in guest rooms and public areas

# CONFERENCE FACILITIES THAT **MEAN BUSINESS**

WHY A CERTIFICATION FROM THE INTERNATIONAL ASSOCIATION OF CONFERENCE CENTERS MAKES A DIFFERENCE



A comfortable and business-purposed meeting environment leads to performance and results. And that's what an IACC certification delivers. Here are just a few of the over 100 check list items that make the Pacific Palms Resort conference facility such a prestigious designation:

- Customizable meeting packages
- Ergonomic vs. standard banquet chairs
- Hard-surface/24"-wide meeting tables vs. 18"-wide cloth-covered tables
- Tackable vs. "Look but don't touch" walls for discussion notes
- Continuous and hearty refreshment breaks vs. periodic and minimally-stocked breaks
- Buffet dining with flexible meal times and menu options
- Event Planners benefit from guaranteed costs, reduced planning time, and attendee satisfaction

ATTENDEE COMFORT=ATTENTION=LEARNING=  
INTERACTION=RETENTION= **PERFORMANCE**

## GREEN INITIATIVES

PACIFIC PALMS RESORT IS AS GREEN AS ITS GOLF COURSES

### General:

- Energy efficient LED and CFL light bulbs
- Lights set at half power when not in use
- Paper, plastic and aluminum recycling containers
- Electric vehicle and Tesla charging stations

### Golf Course and Grounds:

- Irrigated with reclaimed water
- Herds of goats used as natural landscapers...It's true!
- Compost landscape waste for re-use on property
- On-site nursery to grow seasonal plants and flowers

### Banquets:

- Recycle paper, aluminum, plastic and glass
- Minimize use of plastic bottles



### Guest Rooms and Suites:

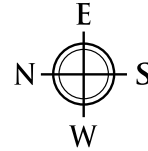
- Green Seal Certified cleaning and paper products
- Linen and towel re-use program
- Energy efficient lighting and A/C units
- Blue recycling containers
- 100% smoke free
- Co-Generation System provides energy conservation and efficiency

# TRI-LEVEL FLOOR PLANS

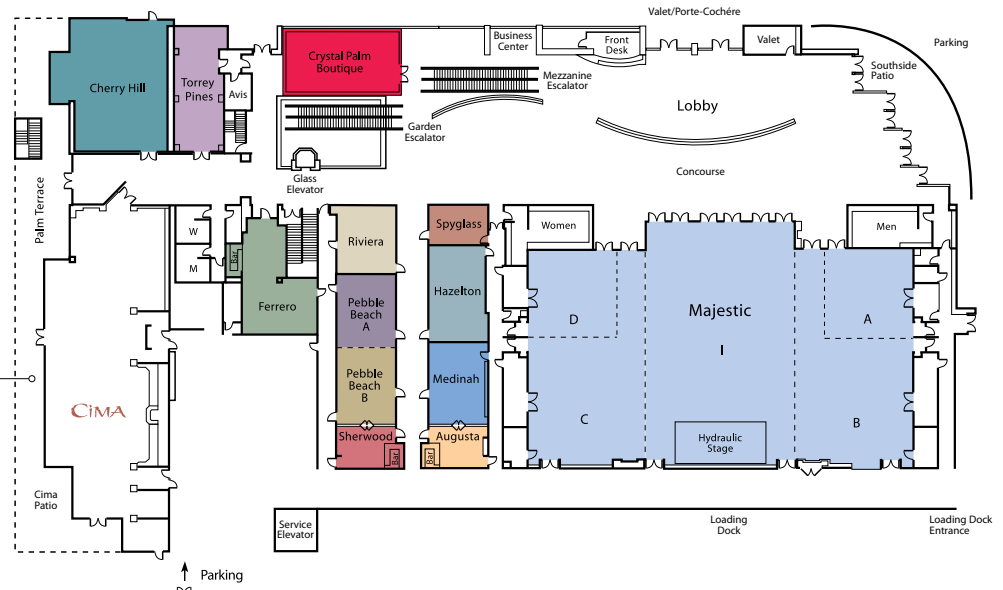


## - MEZZANINE LEVEL -

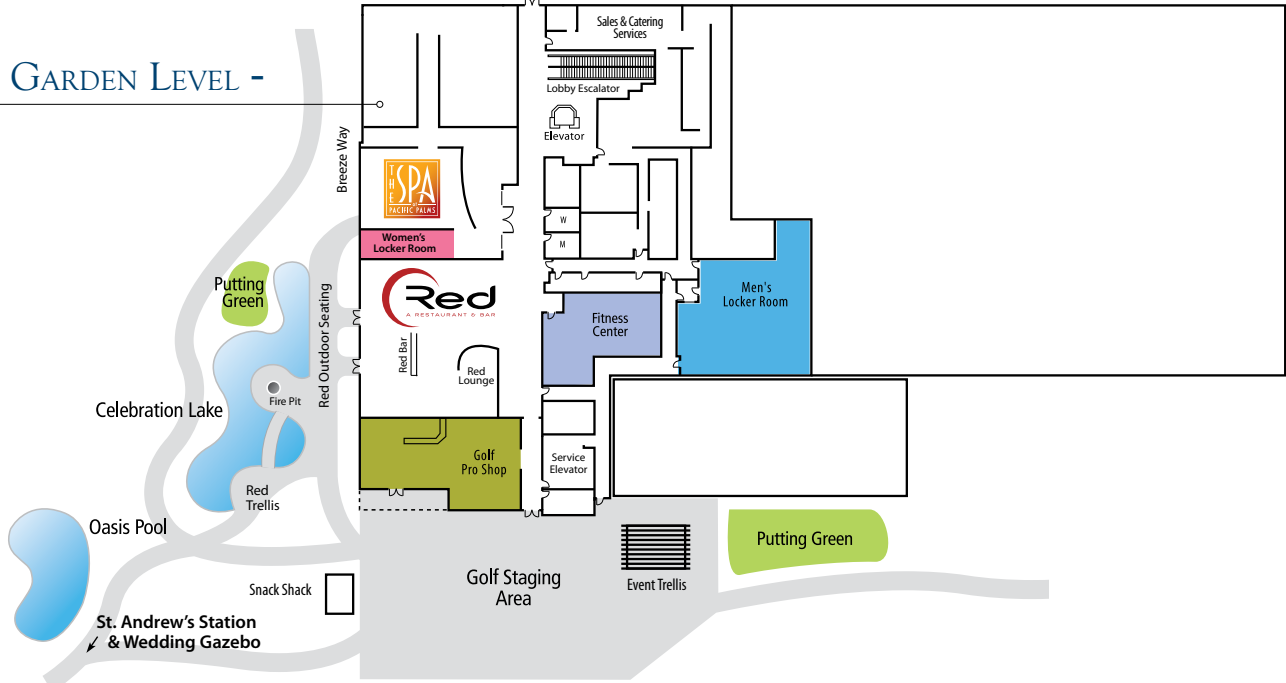
★ Elevators to guest room floors



## - LOBBY LEVEL -



## - GARDEN LEVEL -





# EVENT SPACE CAPACITY

NO, IT'S NOT AN EYE-CHART. IT'S EYE-CANDY!

## LOBBY LEVEL CAPACITIES

Event Room	Dimensions LxWxH	Total Sq Ft	Theater	Classroom* Std/Conf	Conference Conf	U-Shape* Std/Conf	Cluster Conf	Rds of 10/12 60"/72"	Crescent Rds-7 60"	Reception	Exhibits 8'x10'/6'T-Tops
Majestic Ballroom	147x80x26	11760	1200	600/480	--	--	420	840/972	588	1200	73/108
Majestic I	61x91x26	5551	500	288/200	72	74/64	180	350/456	245	500	35/51
Majestic AB or CD	43x80x22	3440	350	180/140	72	90/90	120	220/276	154	288	21/31
Majestic B or C	43x47x22	2021	150	112/80	32	60/40	72	120/168	84	150	--
Majestic A or D	35x33x22	1155	90	60/40	24	52/30	42	60/96	42	90	--
Majestic Concourse	--	4480	--	--	--	--	--	--	--	800	5/12
Cherry Hill	44x49x10	1910	200	128/90	40	50/40	60	120/156	84	200	15/22
Pebble Beach A&B	23x60x11	1380	120	64/44	44	54/48	48	100/108	70	120	--
Pebble Beach A	23x28x11	644	60	32/20	16	22/20	24	40/48	28	50	--
Pebble Beach B	23x28x11	644	60	32/20	16	20/20	24	40/48	28	50	--
Hazelton	23x44x10	1012	80	48/34	28	36/32	36	60/84	42	60	--
Torrey Pines	40x20x10	800	50	32/24	36	30/26	24	50/60	35	50	--
Medinah	23x30x10	690	40	28/22	30	25/20	24	40/48	28	40	--
Ferrero	25x25x9	625	50	32/16	18	20/16	20	40/48	28	40	--
Riviera	21x25x10	525	40	22/16	16	20/16	18	30/36	28	35	--
Sherwood	16x21x9	336	20	16/12	10	14/14	6	20/24	14	20	--
Augusta	16x21x9	336	20	16/12	10	12/10	6	20/24	14	20	--
Spyglass	12x21x9	252	20	16/12	10	18/14	12	20/12	14	20	--
Cima Restaurant	--	7800	--	--	--	--	--	190/180**	--	225	--
Cima Patio	--	1617	--	--	--	--	--	100	--	150	--

## MEZZANINE LEVEL CAPACITIES

Event Room	Dimensions LxWxH	Total Sq Ft	Theater	Classroom* Std/Conf	Conference Conf	U-Shape* Std/Conf	Cluster Conf	Rds of 10/12 60"/72"	Crescent Rds-7 60"	Reception	Exhibits 8'x10'/6'T-Tops
Pavilion Tent	40x120x18	4800	500	320/--	--	--	150	480/384	294	550	30/42
Colonial Ballroom A&B	60x80x12	4800	450	200/160	120	120/90	140	350/396	245	450	30/44
Colonial Ballroom A	53x60x12	3180	275	130/112	64	60/56	80	200/264	140	275	19/29
Colonial Ballroom B	27x60x12	1620	150	64/44	50	54/44	48	80/132	56	150	10/15
Colonial Foyer	L Shaped	1832	--	--	--	--	--	--	--	150	5/12
Pine Valley	27x54x9	1458	85	50/40	36	40/31	42	80/120	56	90	--
Sedona	21x32x9	672	40	32/24	16	24/20	18	40/36	21	40	--
Congressional	20x33x9	660	70	40/30	32	32/28	24	60/60	42	60	--
Valencia	21x29x9	609	40	32/24	16	24/20	18	40/36	21	40	--
Inverness	18x29x9	522	30	24/18	16	22/18	18	30/36	21	36	--
Sandpiper	16x29x9	464	30	20/20	16	20/18	18	30/36	21	36	--
Pacific Dunes	18x25x9	450	40	31/16	16	20/14	12	30/36	21	30	--
Bandon Dunes	18x24x9	432	40	32/16	16	20/14	12	30/36	21	30	--
Spanish Bay	18x21.5x9	378	20	20/16	12	16/12	12	20/24	14	24	--
The Hot Spot	40x25x9	1000	100	50/50	25	20/20	30	100/96	56	80	--

## EXTERIOR VENUE CAPACITIES

Event Room	Dimensions LxWxH	Total Sq Ft	Theater	Classroom* Std/Conf	Conference Conf	U-Shape* Std/Conf	Cluster Conf	Rds of 10/12 60"/72"	Crescent Rds-7 60"	Reception	Exhibits 8'x10'/6'T-Tops
St. Andrews Station	--	--	--	--	--	--	--	100/96	--	150	--
Ike Golf Trellis	28x28	784	--	--	--	--	--	50/60	--	60	--
Red Patio (All areas)	--	--	--	--	--	--	--	--	--	240	--
Red Patio (Main area)	--	--	--	--	--	--	--	--	--	120	--
Red Fire Pit	--	--	--	--	--	--	--	40	--	60	--
Red Trellis	--	--	--	--	--	--	--	40	--	60	--
Red Circle	--	--	--	--	--	--	--	20	--	25	--
Red Lounge (Inside)	--	--	--	--	--	--	--	40	--	50	--
Gazebo	--	--	--	--	--	--	--	200	--	800	--

\*Banquet Style Chairs and Tables/IACC Approved Ergonomic Chairs and Meeting Tables (Classroom & U-Shape Set-Up)

\*\*Cima's existing table and chair furniture always remain, but can be re-set, (round tables may be added)

00119

# MEETING & EVENT VENUES

SPACE TO RE-THINK, RE-CONNECT, AND RE-BOOT



Majestic Ballroom



Majestic Ballroom



Augusta Board Room



Cherry Hill Room



Colonial Ballroom

Colonial Ballroom



Red Patio



Lobby & Concourse



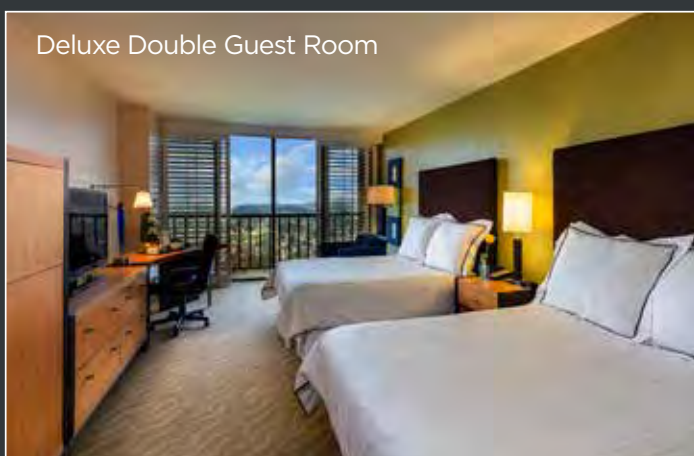
Pavilion

## ROOMS/SUITES

SPACIOUS GUEST ROOMS WITH A DIFFERENT POINT OF VIEW—  
MOUNTAINS, GOLF COURSES, AND CITY



Deluxe King Guest Room



Deluxe Double Guest Room



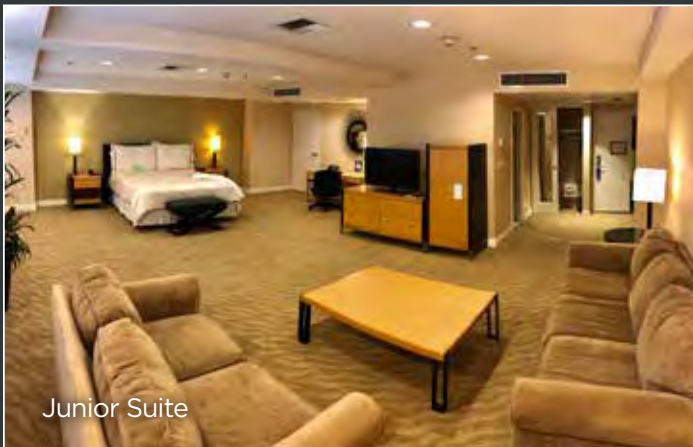
Balcony View

**Nestled on a hilltop of 650 lushly landscaped acres,** the resort's 292 guest rooms and suites wow guests with floor-to-ceiling windows and balconies overlooking panoramic views of the San Gabriel Mountains and two picturesque golf courses.

Designed for spaciousness and comfort, Pacific Palms' luxury accommodations are brimming with thoughtful details, like plush robes, slippers, cozy bedding, and high-tech desks.



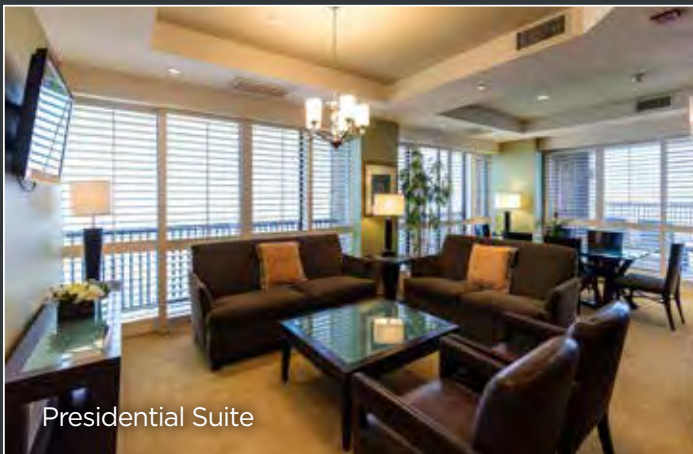
Parlor Suite and King Guest Room



Junior Suite



Hospitality Suite



Presidential Suite



Executive Lounge

**Other features include:**

- Complimentary Wi-Fi
- 6 Parlor Suites, 1 Junior Suite, and 1 Hospitality Suite
- Presidential Suite with private balcony and hot tub
- Executive level rooms and lounge
- Ergonomic desk chairs
- Coffee maker, mini-bar, ironing board and iron
- Granite bathroom surfaces, fine linens, and signature bath products
- Asian amenity guest rooms
- Complimentary use of full-service fitness center

# RED RESTAURANT

WELCOME TO ELEVATED DINING



Red Patio



Red Restaurant



## **Fresh California Cuisine meets Asian-Pacific flair at Red, our contemporary restaurant & bar.**

Open daily for lunch and dinner, Red is the perfect place to savor upscale dining on the lakeside patio or enjoy specialty drinks and light bites on weekdays at Happy Hour on the Hill at Red Bar. Popular dinner entrees include Pan Roasted Chilean Sea Bass, Blue Cheese Crusted NY Strip Steak and New Zealand Rack of Lamb.

And Red delights guests with plenty of Asian-Pacific favorites such as Dim Sum, Mongolian Beef and a variety of wok specialties. Additionally, each entrée comes with panoramic views of the San Gabriel Mountains, Celebration Lake and our beautiful "Babe" golf course.

To top it off, the views are accompanied by a dramatic fire pit and guests are serenaded with live music that includes Classical, Flamenco, and Rock guitar.

Red feels like a setting for special occasions without the special occasion prices.

Call us at 626-854-2509 for information and reservations.



Red Lounge



Red Bar

Red Patio



Red Fire Pit



Live Music



# CIMA RESTAURANT

A ROOM WITH A VIEW FOR BREAKFAST,  
CATERED DINING, AND SPECIAL EVENTS



Cima Restaurant



Cima Private Event



Lake-Golf-Mountain Views



Cima Semi-Private

**Spectacular views of Celebration Lake, two golf courses, and the San Gabriel Mountains are included with every meal at Cima Restaurant.** Delicious daily breakfast buffets are a convenient option for corporate events. Additionally, private and customized lunch and dinner events are available for up to 300 guests.

For groups both big and small, Cima has an atmosphere that's as fresh as its food.

Call us at 626-854-2335 for information and reservations.



# THE SPA AT PACIFIC PALMS

WE PUT THE "AHH" IN SPA



Hot Tub



Salon



Relaxation Lounge



Couples Massage Room



**Indulge your attendees with rejuvenating spa treatments in an oasis of pure tranquility.**

Our luxury lifestyle spa will pamper your group with healing massage techniques, invigorating body treatments, soothing signature facials, and customized blends of organic skincare products. Certified technicians and therapists personalize every treatment to melt away tension and revitalize guests with restorative escape.

You can even indulge without the splurge. Customized packages are available to experience our spa's full offering at a special value. And we can bring the spa to you with energizing meeting breaks and chair massages that your attendees will remember long after the conference.

The Spa at Pacific Palms offers 11,000 square feet of pure bliss; including spacious relaxation lounges, hot tubs, women's steam room, fitness center, boutique, and full-service beauty salon; leaving guests feeling terrific from head to toe.

Call us at 626-854-2502 for reservations.

# GOLF ONLY PRESENTING OUR INDUSTRY HILLS GOLF CLUB

L.A.'S ONLY CONFERENCE RESORT WITH ON-SITE CHAMPIONSHIP GOLF



This 650-acre golf complex surrounds the resort and includes the Dwight D. Eisenhower, a.k.a. "Ike" & Babe Didrickson Zaharias, a.k.a. "Babe" Courses. These two championship courses were voted "Best Public Courses in the USA" by the National Golf Course Owners Association, awarded 4 Stars by Golf Digest, and are the "Official Home of the Southern California PGA".

Breathtaking views and pristine grounds of landscape make for exciting play. The Industry Hills Golf Club is one of California's most noteworthy public golf courses and is the only on-site hotel golf course in all of Los Angeles County. Additional golf offerings include:

- Golf events & tournaments for up to 500 golfers
- Team-building contests and activities on the putting greens, short game chipping area and driving range
- Double Decker lighted driving range
- Short-game practice area and four practice putting greens
- Complete Golf Pro Shop, rental clubs and locker room
- Private lessons and group clinics by PGA professionals
- Annual memberships

Call us at 626-854-2170  
for golf information  
and tee-times



*"Pacific Palms  
Resort is my  
favorite golf  
course to play  
in Southern  
California!"*

**Kevin Na**

PGA Tour Professional



INDUSTRY HILLS GOLF CLUB  
*at*  
PACIFIC PALMS RESORT

## THE LEGENDARY “IKE” & “BABE” GOLF COURSES



The “Ike”



The “Babe”

Designed by both William F. Bell and Casey O’Callaghan, locals and fans affectionately call this golf course “Ike”. Because “Ike” attracts golfers from around the world; it is fitting that this 18-hole, classic, par 72 course be named for a popular world leader who also happened to love the game. “Ike” stretches 5,662 yards from the forward tees to 7,211 yards from the championship tees, with slope ratings from 130 to 145. It’s no wonder that the “Ike” has been the proud host of many U.S. Open Qualifying tournaments as well as LPGA tour events.

This 18-hole course is named for Babe Didrikson Zaharias, one of America’s most decorated all-around athletes. Today, the “Babe” welcomes players of every skill level. Designers William F. Bell & Casey O’Callaghan designed the Zaharias course to be intentionally narrow and long, maximizing the expansive acreage of the hilltop resort. It ranges from 5,363 yards from the forward tees to 6,821 yards from the championship tees. This par 71 features slope ratings ranging from 126 to 138, making the course worthy of the great athlete for which it is named.



## OUR CLIENTS SAY IT **BEST**

“The meeting was perfect!!!! Everything was perfect! Everything!  
Thank you so very much for all of your assistance.”

*~ Bank of America*

“Your team should be very proud of delivering a top-notch event.  
Our dealers had an outstanding time and wonderful overall experience.”

*~ Kia Motors*

“What an event! We can’t thank you enough for our unbelievable night! I have been to  
many wedding events and parties all over the world and Pacific Palms Resort tops  
the list ...The entire staff was amazing thank you!

*~ Vans Shoes*

“I am appreciative of your willingness to find innovative alternatives to create the  
most compatible meeting package to fit our needs. Every detail, from the  
luncheon service, to the technology staging... you demonstrated an outstanding  
attitude and first-class service.”

*~ Southern California Edison*

“I thought the way in which the entire Staff handled the special requests was beyond  
outstanding. They were polite, courteous and did everything possible to give  
outstanding customer service to any request.”

*~ Far West Ski Association*

“Thank you kindly for your entire staff’s hospitality.  
No detail was left untended and the food was amazing! The resort is absolutely  
beautiful. I have been in this business for a long time and it is partners like yourself  
that push all of us to be better at what we do.”

*~ American Express Meetings & Events*

“Just want to thank you for making the Gelson’s event successful once again!  
Your entire staff should be commended for their exceptional service.  
With as many attendees as we had, it is no easy task. See y’all next year!”

*~ Gelson’s Markets*

“We host several events throughout the year but I’ve never formally thanked your team  
for the outstanding service provided in making our events successful.  
We appreciate the hard work and smiling faces who are so gracious and attend  
to our every need. At every touch point, I was met with friendly  
and expeditious service.”

*~ Hospital Association of Southern California*

# THE REASON WE'RE L.A.'S WORK & PLAY RESORT

SEE WHAT YOU'VE BEEN MISSING!



Double Decker Lighted Driving Range



Oasis Pool



Red Bar



Live Music



Walking Trails



Fitness Center

**Attendees at many business conferences need to leave the hotel to have a little fun.** At Pacific Palms Resort, both work venues and play amenities are all-inclusive. During free time, guests can hang out at the Oasis Pool, hit some balls at the range (day or night), release tension at the spa or the fitness center, hike the expansive property, sing and laugh at our karaoke bar, or simply enjoy some live music or drinks with co-workers. Fun activities are great for team building and create lasting memories. We're happy to help make that goal a reality.



# JUST THE **FACTS**



## Meetings, Conventions & Social Events

- International Association of Conference Center (IACC) Certified
- 45,000 square feet of function space including the 11,760 square-foot Majestic Ballroom
- 28 meeting and breakout rooms and on-site Audio Visual
- Ergonomic chairs, hard surface conference tables and tackable wall surfaces
- Meeting Packages with continuous refreshment breaks & buffet dining
- Indoor and outdoor wedding and social event facilities
- Authentic Asian Cuisine

## World-Class Golf – “#1 Golf Course in USA-2010” National Golf Course Owners Association

- Los Angeles’ only full-service, destination golf resort - awarded 4 stars by Golf Digest
- 36 holes on two championship golf courses
- Driving range, short game area and 4 putting green practice areas
- Pro Shop offers the latest in designer golf wear and high-end golf equipment
- On-site PGA Professionals and Golf Academy

## Accessibility

- Centrally located between four major airports: LAX, Ontario, Long Beach and John Wayne
- Easily accessible by four major interstate highways
- 25 minutes from downtown Los Angeles, Anaheim (Disneyland) & Old Town Pasadena
- 40 minutes to Hollywood and Universal Studios
- 45 minutes to Southern California beaches and mountains

## Tours and Transportation

- Avis/Budget Car Rental On-Site
- Authorized airport transfers and car rental assistance
- Tours of Southern California’s attractions, wine tours, sporting events and concerts
- Uber and Lyft

## Guest Accommodations

- 292 rooms and suites with balconies and floor-to-ceiling windows
- 6, 1-bedroom Parlor Suites, 1 Junior Suite & 1 Hospitality Suite
- Presidential Suite with private balcony and hot tub
- Executive level rooms and lounge
- Coffeemaker, ironing board and iron
- Granite bathroom surfaces, fine linens, bathrobes and signature bath products
- High-tech desks and ergonomic chairs
- Complimentary Wi-Fi in all guest rooms & public areas
- Views of 650-acre grounds, golf courses and the San Gabriel Mountains and Valley

## Guest Amenities and Services

- Non-smoking facility
- Asian amenity guest rooms
- Pet-friendly
- Complimentary USA Today
- Full-service complimentary fitness center with strength and cardio equipment
- Hilltop oasis pool and hot tub with mountain views
- Multiple ADA compliant services
- No Resort Fees and free parking

## Dining & Entertainment

- Red Restaurant & Bar- California Cuisine with an Asian Pacific Flair, lakeside dining, dramatic fire pit and panoramic view, featuring live Contemporary Piano and Classic Jazz
- Cima Restaurant - your daily breakfast and special occasion destination for Private Events, California Champagne Brunch every Sunday, the Cima Dinner Buffet on select holidays
- St. Andrew’s Station special event area
- The Hot Spot featuring karaoke Friday and Saturday nights

## The Spa at Pacific Palms

- 11,000 square-foot luxury lifestyle spa
- Personalized treatments and services by expert therapists and aestheticians
- Full-service beauty salon, sauna, relaxation room & boutique
- Bachelorette & Private Social Spa Parties



DISCOVER THE JOY OF **SURPRISE**

DISCOVER PACIFIC PALMS RESORT



One Industry Hills Parkway  
San Gabriel Valley, CA 91744

For sales assistance, call us at: 626.854.2315  
Or email us at: [sales@pacificpalmsresort.com](mailto:sales@pacificpalmsresort.com)  
[PacificPalmsResort.com](http://PacificPalmsResort.com) • [IHGolfClub.com](http://IHGolfClub.com)



# PACIFIC PALMS RESORT

---

L.A.'S HILLTOP HIDEAWAY

